

## Kainga Ora Bike Cage

<b>Client</b>	<b>Sector</b>
Kainga Ora	Housing Development
<b>Location</b>	<b>Year Completion</b>
Rotorua, New Zealand	Dec. 2023
<b>Value</b>	
\$35K	

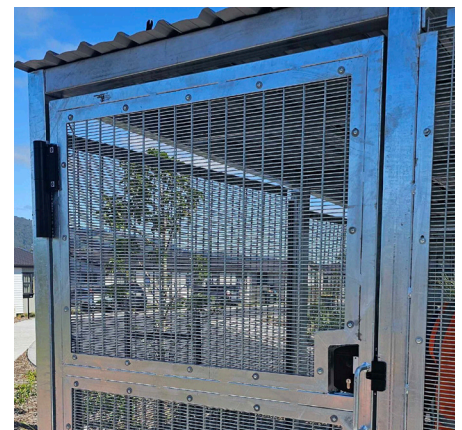
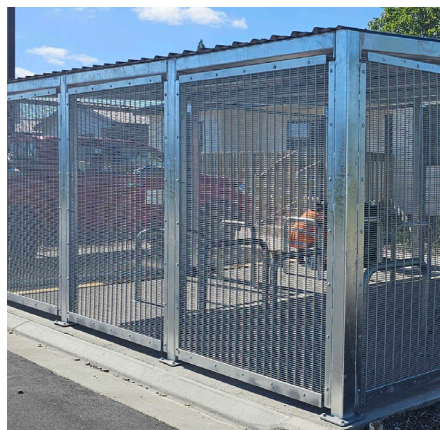


### Hampden installs another Secure 358 Bike Cage

In October 2023, Hampden was engaged by Kainga Ora to design and construct a bespoke secure 358 Bike Cage for a housing development located in Rotorua. The purpose of this bike cage is to protect a wide range of bikes, from children's bikes to E-bikes, from both theft and harsh weather conditions. After thorough consultation with the client and focus on the end user, Hampden produced shop drawings which were later approved for our in-house fabrication team and the modular system was then prepared for installation and completed in December 2023.

#### The Stats:

- Steel construction - all Hot Dip Galvanised
- Custom designed enclosure 5.4m long x 4.8m wide Bike Cage
- Featuring 358 Anti-climb Rigid Mesh - high security long life product
- 1x pedestrian gate with Locinox hydraulic self-closing hinges
- Locinox stainless steel anti-panic lock - mechanical lock outside and free egress from inside the cage
- Ribline 800 roofing iron
- Security and anti-tamper fixings



#### Product Used

- Bike Cages + Parking
- Storages Cages & Enclosures
- 358 Anti-Climb Mesh

Case Study is here: [www.hampden.co.nz/case-study/kainga-ora-bike-cage](http://www.hampden.co.nz/case-study/kainga-ora-bike-cage)