



Going Touchless

Hampden specialise on securing perimeters to keep people and assets safe, and now with a new normal comes change to how we interact with our environment.

A crucial step in keeping people safe is creating a touchless environment.

There are a few solutions that Hampden offer which can support the achievement of the touchless environment and provide piece of mind.

The following solutions can be integrated easily into your property or next project:

- Thermal detection | facial recognition solution
- Touchless entry | exit sensor switches
- Elbow and/or Foot door activation pads
- Automation for gates

Thermal detection system

For Turnstiles and doorways our suppliers have launched an additional range of products in their CCTV range, providing quick, easy, and smart technology in the fight against COVID-19. These rapid thermal detection products are suited to specific transit areas, from small to medium, through to medium and highly populated spaces.

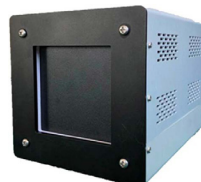
Key Features:

- 8 inch LCD screen
- 2MP Binocular lens, f = 3.97mm @ F1.6
- High precision body temperature measurement $\pm 0.3^{\circ}\text{C}$
- Camera with integrated DVA (Deep Video Analysis) algorithm for facial recognition
- Facial recognition also works with the mask worn
- Facial recognition at a distance up to 2.2m
- Maximum database capacity: up to 20,000 faces



IPTHBCAMA05F01A

Thermal camera resolution: 384x288 pixels, 12.3mm lens
Visible camera resolution: 5MP (2592x1944) @ 30fps, 8mm lens
Accuracy: $\pm 0.5^{\circ}\text{C}$ (without blackbody) $\pm 0.3^{\circ}\text{C}$ (with blackbody)
Measuring range: $30^{\circ}\text{C} - 42^{\circ}\text{C}$



BBTHA

Temperature resolution: 0.1°C
Accuracy: $\pm 0.2^{\circ}\text{C}$
Temperature stability: $\pm 0.1-0.2^{\circ}\text{C}/\text{h}$
Effective emissivity: 0.97 ± 0.02
Operating temperature: $0-40^{\circ}\text{C}$



IPTHBCAMA05F02A

Thermal resolution: 160x120 pixels, 12,3mm lens
Visible camera resolution: 5MP (2592x1944) @ 30fps, 8mm lens
Accuracy: $\pm 0.5^{\circ}\text{C}$ (without blackbody), $\pm 0.3^{\circ}\text{C}$ (with blackbody)
Measuring range: $30^{\circ}\text{C} - 42^{\circ}\text{C}$

IPTHPAN02FA



For more information on the available products, please click view the brochures here:

- [Comelit Thermal Sensing Solutions](#)
- [Thermal Camera Range](#)

Elbow and Foot Touchpad



- Use your elbow and/or foot (mount position dependent) to open an auto door. A simple and effective solution.

No touch sensor switch – entry exit button

- Simply wave your hand to activate!
- Effective, simple and compliant
- Used in to activate doors and gates without the need to touch the button. With a range of 2mm to 50mm, simply swipe your hand in front of the sensor to activate the switch



[See here](#) for Hampden's People Tracking Solutions which include effective ways to maintain excellent visibility and control of all people – including staff and contractors

"The measure of intelligence is the ability to change"

Albert Einstein

Tracking solutions is here: [hampden.co.nz/people-tracking-solutions](https://www.hampden.co.nz/people-tracking-solutions)